



## Learning Center opens

Gallaudet's new Learning Center is open today, and registration for this semester is being held in the large multi-purpose facility this week.

The opening of the Learning Center is the culmination of more than two years of intensive planning and two and a half years of construction. Gallaudet College has grown considerably in the past decade, and the new facility helps fill the need for additional classroom space and instructional support areas.

The Learning Center integrates the resources and services of the Gallaudet College Library and several production areas of College Educational Resources that support instruction at the College with instructional space. There are also specially designed classrooms throughout the building, as well as areas for individualized instruction.

The concept of a Learning Center was created during the development of a campus master plan in 1967. At that time it was uncertain what would be needed in the Learning Center. Another master plan in 1976 more clearly defined the relationship of classrooms to other support services and suggested that classrooms be supplemented with Library and educational technology services. The Learning Center was therefore designed to emphasize the interrelationships of instruction and instructional resources. Also, in early 1976 the Learning Center Steering Committee, chaired by David McGuinness, was formed to review descriptions and develop specifications for the building.

The Gallaudet College Library, College Educational Resources and Instruction each have about one-third of the space in the new building. All three functions are in various areas through-

out the building, making the Library and CER facilities and services more accessible to the classrooms than if they were in separate areas.

### Gallaudet College Library

All of the current Library services and resources are now located in the Learning Center. Library resources in the building include the general collection, deafness collection, reference collection, periodicals, archives, nonprint materials (one part of the individualized learning area) and catalogs/indexes.

The primary collection of videotapes has been moved to the new cable dissemination center at MSSD for the best possible technical quality. Heavily used sign language videotapes are also available in the Learning Center. Requests for cable service may be made from the Learning Center. Television and audiovisual equipment is available from the Individualized Learning Service Desk.

The facilities master plan suggested a certain amount of space in the Learning Center for Library functions. There was no way future growth of the Library

could be incorporated into the building, but it also did not appear wise to separate Library services into two parts. So it was decided to separate the book collection into a core group of 100,000 volumes and a supplementary collection which would eventually total 200,000 volumes. This division is not required at the present time but will occur when the Learning Center shelving capacity is exhausted. The old boiler room area in Hughes Gym, which is a functional part of the Learning Center, will be renovated to house the supplementary collection on compact shelving. When completed, this area will have two floors.

### College Educational Resources

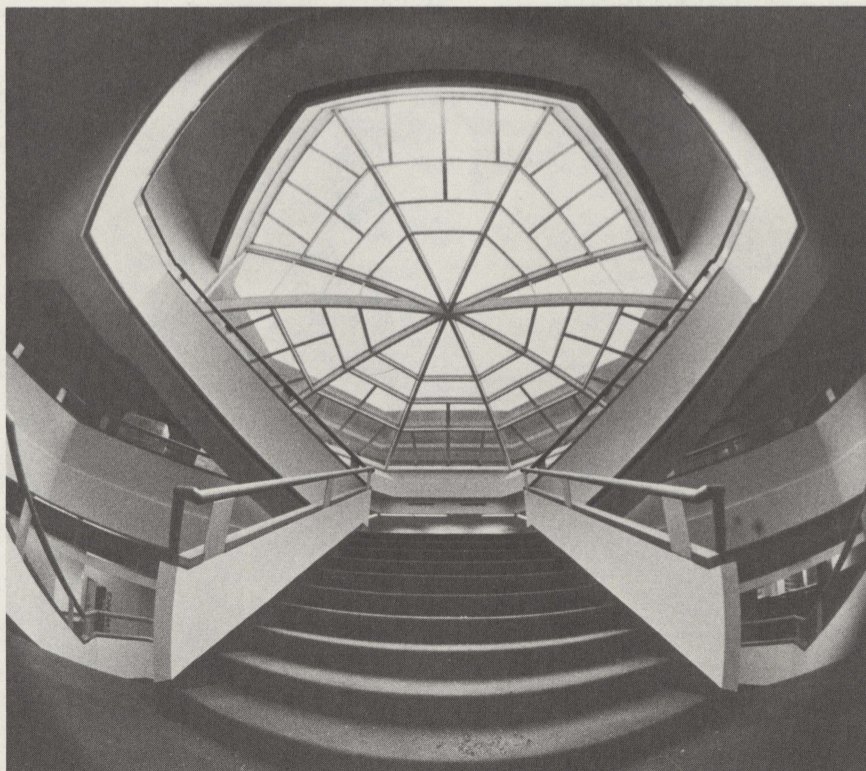
Although College Educational Resources is still headquartered at the Model Secondary School for the Deaf, the Learning Center contains several CER production areas which support the instructional work of the College.

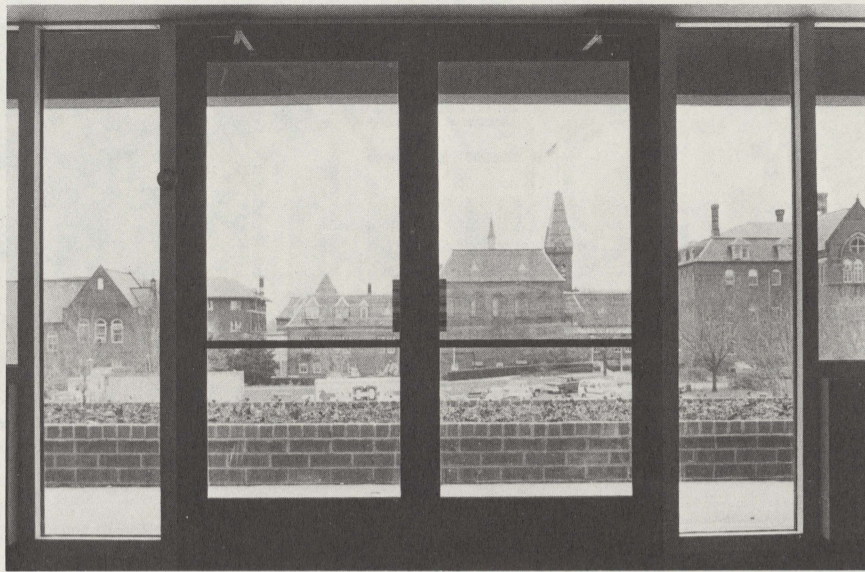
The major educational technology functions in the Learning Center are television, instructional development and photography.

The 2,400-square-foot television studio in the building contains several control rooms and multiple setup capabilities. Nearby is an area for construction and storage of scenery. The new TV studio will primarily be used for professional television production on campus. The College currently has a high volume of TV production. Two medium sized studios are also located at MSSD and one at KDES.

The graphics room is equipped to assist in production of overhead trans-

*continued on page 4*





## New building designed to enhance mall

As you look at the new Learning Center from Hall Memorial Building, all you see is the "tip of the iceberg." View the building from Chapel Hall and you can see that there are three levels. But it is not until you walk inside, and the building unfolds before your eyes, that you begin to get a feeling of the scope and magnitude of Gallaudet's newest facility.

The Learning Center is roughly 93,000 gross square feet, and almost two-thirds of it is underground. When you walk inside the building, most of the interior is visible at once. The open areas provide the opportunity for easier access to the variety of services now offered under one roof—Gallaudet College Library, College Educational Resources and Instruction. Because entrances to the building are on the middle level, it is not necessary for a person to go up or down more than one flight of stairs to get to any destination within the building.

Although located in the northern part of the mall, the massive brick-faced concrete structure appears to grow naturally out of the mall rather than being perched on top of it. Although the mall area was identified more than 12 years ago as the ideal site for the Learning Center, the original idea for the building appeared as a wooden block stuck on top of the mall on a model of the campus. But that concept changed. The grade difference on the mall allowed much of the building to be constructed underground and permitted access to the facility on the middle level from three directions.

Large windows look out onto the mall area. Balconies can be used for reading, conversation or relaxation, and provide an excellent view of the mall and Washington landmarks. In general, the building was planned to add beauty and interest to the mall area rather than to detract from it.

Energy conservation was an important factor in designing the building. Underground placement allowed maximum use of the natural insulation of the land itself. A small heating system can therefore accommodate all of the requirements for heat in the building. An extensive ventilation and air conditioning system was installed to provide a constant flow of fresh air.

Energy conservation was also a reason for installing revolving doors rather than automatic swinging doors. With the revolving doors, the inside of the building is continually separated from the outside.

Lighting in the Learning Center is provided in several ways. Perhaps the most striking feature of the building is the large skylight in the center, which provides a path for natural light to travel to the middle and lower levels. There are four smaller skylights in the building.

The large skylight is recessed into the building in order to meet DC Building Codes, which say that each floor must be separated from other floors for fire safety reasons. Originally it was hoped that the skylight would be outside the building and that it would be possible to look down from the upper level directly to the other two levels. This was not

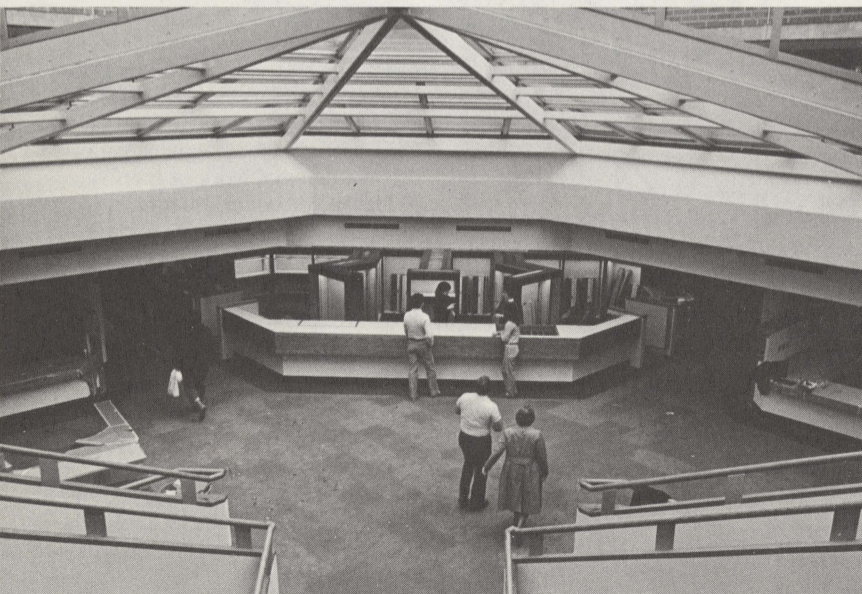
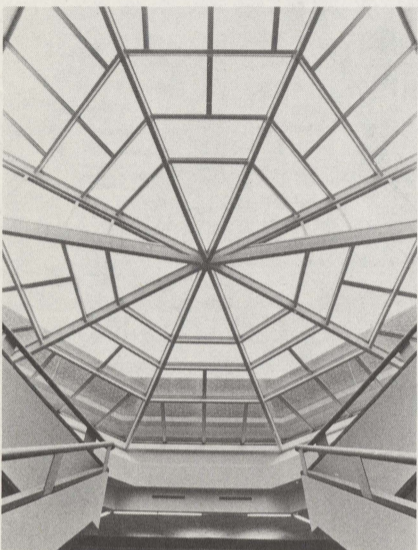
possible because of the building codes, but the architect was able to come up with an ingenious alternative. Since the middle level of the building is small enough to be considered a mezzanine or balcony in relation to the lower level, it became necessary only to separate the lower two levels from the top to meet the DC regulations. This was done by lowering the skylight so that it is actually inside the building.

Other than natural light, a task-ambient lighting system is used in the building. Light is provided for specific work areas (for various "tasks") and is supplemented by general (ambient) lighting. The system provides light where it is needed rather than illuminating the entire building.

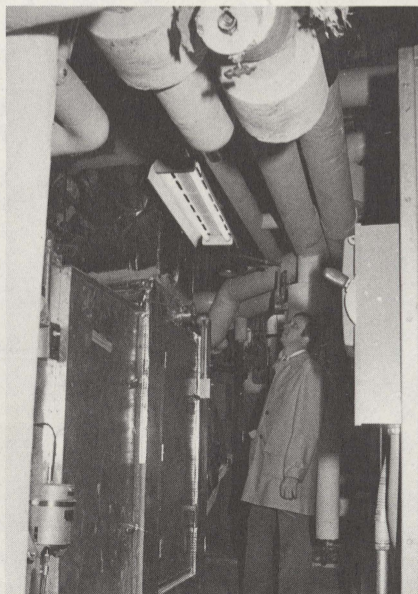
The three levels of the Learning Center are "color coded." Ducts and doors are red on the lower level, orange on the middle level and yellow on the upper level, to help orient visitors and others.

Total cost of the Learning Center was about \$12 million—\$10 million for construction and \$1.8 million for equipment. The Kling Partnership, based in Philadelphia, was the architectural firm, and David W. Doelp was project architect. The building was constructed under supervision of Turner Construction Company.

A master landscaping plan has been developed which includes a beautification program for the mall. Lighting in and around the building will make the mall a better, safer and more attractive area at night.



The Central Desk on the middle level of the Learning Center is where you can go for general information.



Senior Construction Project Manager Howard Levo checks out the inner workings of the building.

On the  
**GREEN**

Published each Monday for staff and faculty of Gallaudet College by the Office of Alumni and Public Relations.

**APR Director:**  
Jack R. Gannon

**Director of Publications:**  
Laura-Jean Gilbert

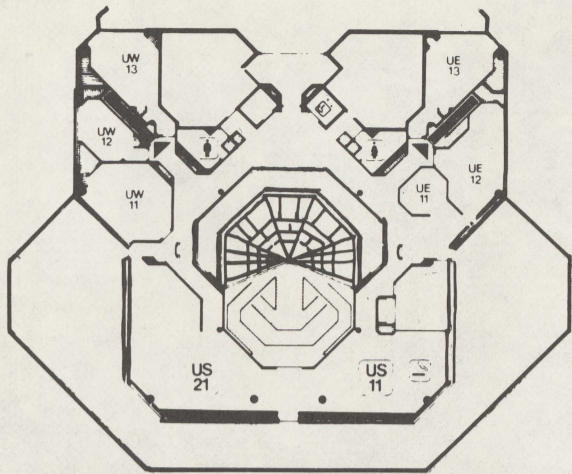
**Editor:**  
Vickie Walter

**Contributors for this issue:**  
Fern Edwards  
David McGuinness  
Jan Richardson  
Leonard Riek

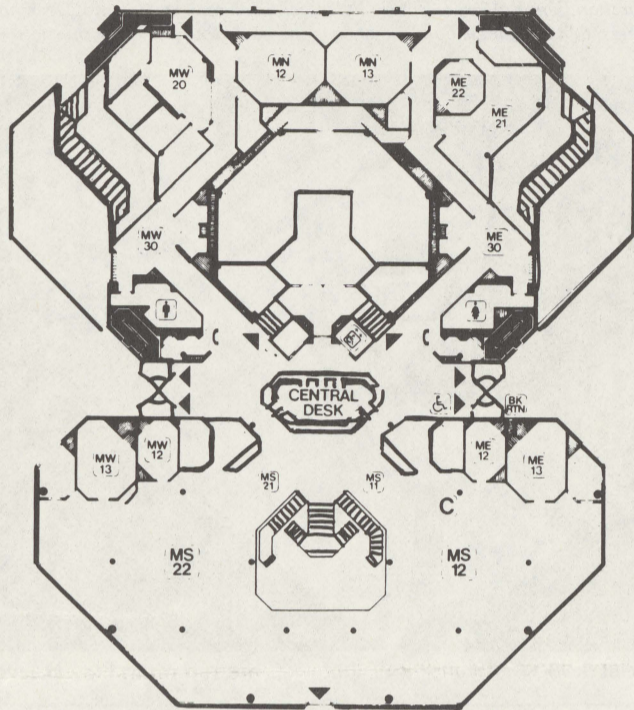
**Photographers:**  
Chun Louie  
Charles Shoup

Gallaudet College is an equal opportunity employer-education institution. Programs and services offered by Gallaudet College received substantial financial support from the Department of Education.

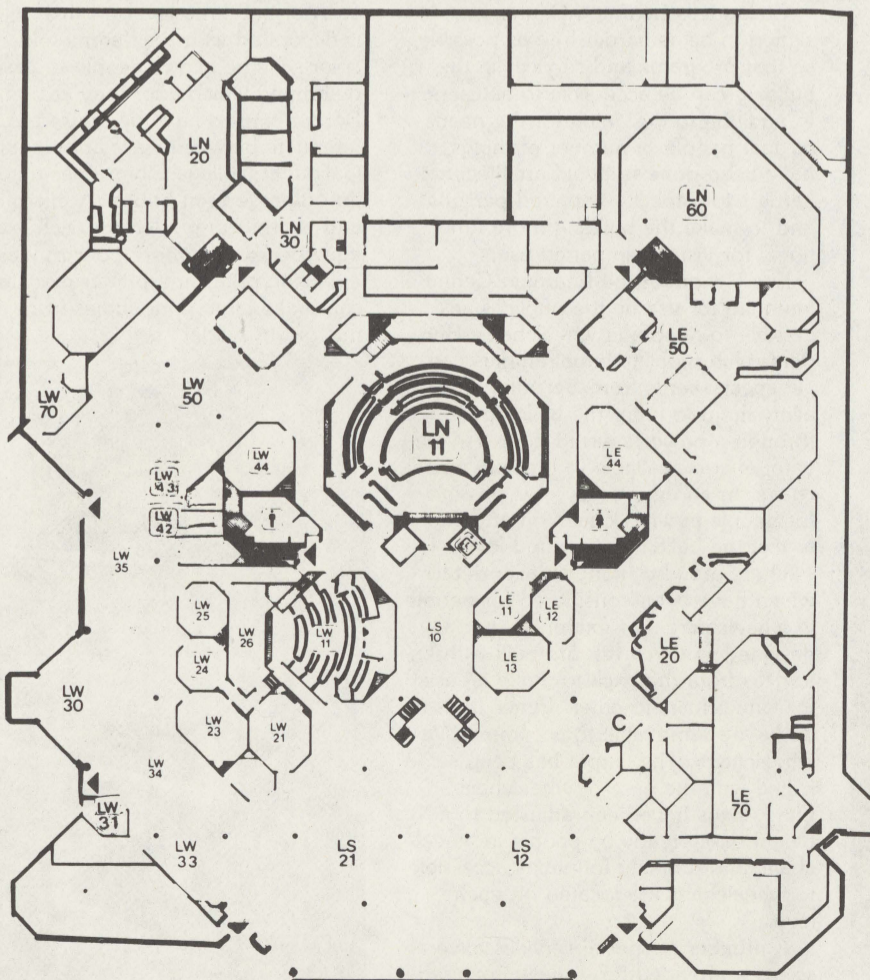
# LEARNING CENTER FLOOR PLAN



**UPPER LEVEL**



**MIDDLE LEVEL**



**LOWER LEVEL**

- U...UPPER LEVEL
- M...MIDDLE LEVEL
- L...LOWER LEVEL
- N...NORTH QUADRANT
- S...SOUTH QUADRANT
- E...EAST QUADRANT
- W...WEST QUADRANT
- ELEVATOR...[Elevator icon]
- EXITS/STAIRS...[Exit icon]
- MEN'S RESTROOMS...[Men's icon]
- WOMEN'S RESTROOMS...[Women's icon]
- SMOKING AREAS...[Smoking icon]
- COPY MACHINES...[Copy icon]
- TELEPHONES...[Phone icon]

## GENERAL AREAS:

- ADMINISTRATION [MW 20]
- ARCHIVES [LW 70]
- BOOKS (CORE COLLECTION): [LW 35/34] [LS 21/12]
- DEAFNESS COLLECTION [LW 50]
- GRAPHICS [LN 20]
- INSTRUCTIONAL DEV. & EVAL. [LE 50]
- INDIVIDUALIZED LEARNING [LE 20]
- PERIODICALS [MS 12]
- REFERENCE COLLECTION [MS 22]
- TECHNICAL SERVICES (LIBRARY) [LE 70]
- TECHNICAL SUPPORT (C.E.R.) [LN 60]
- TELEVISION OFFICES [LN 30]

## SPECIAL AREAS:

- ASSEMBLY ROOM [LN 11]

- CLASSROOMS:
- |         |         |         |         |
|---------|---------|---------|---------|
| [LW 11] | [LW 12] | [LW 13] | [UE 13] |
|         | [MN 12] | [MN 13] | [ME 22] |
| [MW 13] | [MW 12] | [ME 12] | [ME 13] |
| [LW 44] | [LW 21] | [LE 11] | [LE 44] |
| [LW 25] | [LW 24] | [LW 23] | [LE 13] |

- CONFERENCE ROOMS: [UE 12] [ME 21] [LW 26]
- EXHIBITS [LS 10]
- GROUP STUDY ROOMS: [LW 31] [LW 42] [LW 43]
- LOUNGES: [UE 11] [LW 30]
- VIEWING ROOM [LW 11]

## OTHER AREAS:

- CATALOG / INDEXES: [MS 21] [MS 11]
- INFORMATION (GENERAL) [CENTRAL DESK]
- LOCKERS / COATS: [MW 30] [ME 30]
- TYPING CARRELS: [MS 12] [LW 33] [LS 12]
- VENDING MACHINES: [UE 11] [MW 30] [ME 30]

## Learning Center combines 3 areas

*continued from page 1*

parencies and other materials and is open for use by students, faculty and staff. The darkroom areas are designed primarily as production facilities.

The Learning Center also provides for instructional materials development, a service which provides an interface between the faculty and College Educational Resources. As such, it should play an important centralized role in Learning Center activities.

Although the Computer Center itself won't be located in the Learning Center, computer services will be available throughout the building through terminal access.

### Instruction

Classroom space in the Learning Center is found in many locations since a major aspect of the building is to integrate instruction with Library and educational technology services. The building contains 20 small to medium sized classrooms which can accommodate six to 15 students. The shape of all the classrooms is octagonal or modified octagonal. This allows a u-shaped seating arrangement for greater visibility.

Like the smaller classrooms, the large Assembly Room was designed with improvement of communication in mind. From any seat in the room, almost all the other seats can be seen. The Assembly Room holds 90 chairs and has the capability of accommodating about 50 more. The Learning Center also contains a large viewing room for

watching television, films or other media programs, with 44 movable swivel chairs, and an experimental classroom with 24 chairs.

One classroom contains a window where visitors can observe the classes, and three other rooms are set up so classes can be televised and shown in adjacent meeting rooms. This observation capability, which would only be done with the permission of the instructor and the knowledge of the class, makes it possible for visitors to see classes since there is not enough space to invite visitors into the rooms. It may also possibly be used to experiment with teaching and learning.

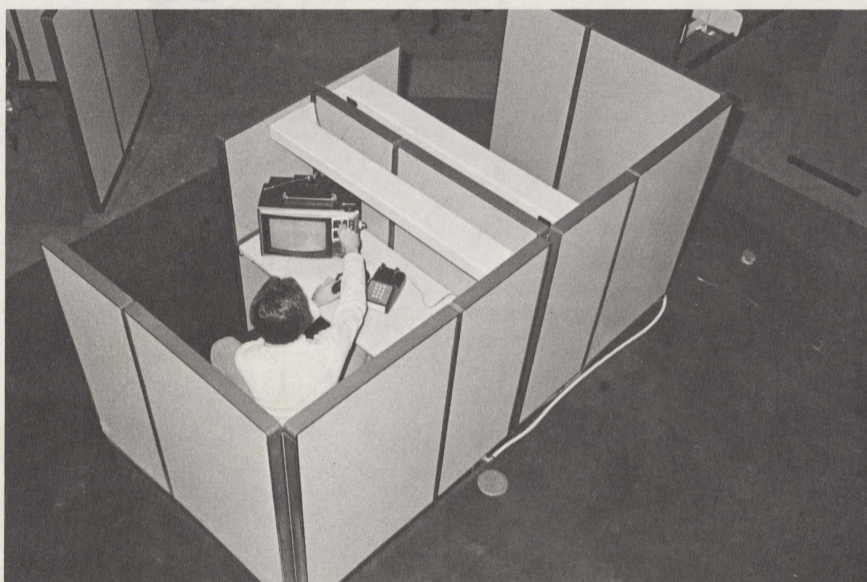
Some temporary office space is available in the Learning Center for people who will work on special projects in the building. Each of the 20 large carrels will be assigned jointly to a faculty/staff member and a graduate student on a semester basis. They will post hours when they will occupy the offices, and at other times any student, faculty or staff member is free to use an office.

A large individualized learning area in the building will complement classroom spaces. This area will include preview rooms for television, film or audiovisual materials. Computer terminals will be available. In a self-study TV room, sign language or a speech can be practiced, or students can create a videotape advertisement for a club or event, to be shown on the campus cable system. An individualized testing area is also available.

Several areas in the Learning Center can be adapted to more than one function. It is hoped that over the years the building will prove to be flexible since, whenever possible, the ability to change has been built in.



Head Librarian Fern Edwards, Sherry Pyles, who will man the Central Desk and her supervisor, Diana Gates, talk in the new building while in the background, right, you can see the old Library.



This student views a videotape through a remote control television hookup in one of the carrels.



GCTV Director Lee Hunter and CER Asst. VP Don Torr appear dwarfed in the huge new television studio.

### Learning Center hours

Sunday	1 p.m.-10 p.m.
Monday	8 a.m.-11 p.m.
Tuesday	8 a.m.-12 midnight
Wednesday	8 a.m.-11 p.m.
Thursday	8 a.m.-11 p.m.
Friday	8 a.m.-6 p.m.
Saturday	9 a.m.-8 p.m.

## Programs and services accessible

Gallaudet's Learning Center was designed to be as barrier free as possible so that programs and services in the building can be accessible to all users. In addition to designing for the needs of deaf people, a number of things have been done to avoid architectural barriers for mobility impaired persons and to make the building more functional for visually impaired users.

Every room in the Learning Center intended for use by the public is accessible to people in wheelchairs. Students with mobility impairments can get special cards from Security which allow them to enter the building through a power-assisted door. An elevator is also available to those in wheelchairs. In an emergency, it is possible for people in wheelchairs on any floor to exit the building at ground level.

There are also many smaller details which have been considered for people in wheelchairs. For example, specially designed study carrels are built with entrances from the back to make it easier for wheelchairs to enter. Pencil trays in desks are removable to accommodate wheelchairs. The carpet has been selected with the ease of wheelchairs in mind, signs have been adjusted to a height easily ready by people in wheelchairs and drinking fountains accessible to wheelchairs are located on each level.

A number of special services have also been provided for visually impaired users of the Learning Center. Raised letter signs have been provided where possible.

For those with some residual vision,

each of the three levels of the building is decorated with a different color. This color scheme allows people to easily determine which floor they are on. Border carpets have been used to differentiate between walls and floors. The Gallaudet College Library has a collection of large print books. A microfiche and microform reader are each equipped with a more powerful lens for enlarging print, and printer machines can make large print copies from the microform reader.



Steering Committee Chairman David McGuinness and architect David M. Doelp take a last look at the Learning Center before the doors open.



Students chat in front of the Central Desk.